



# Community Meeting

## Program

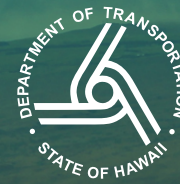
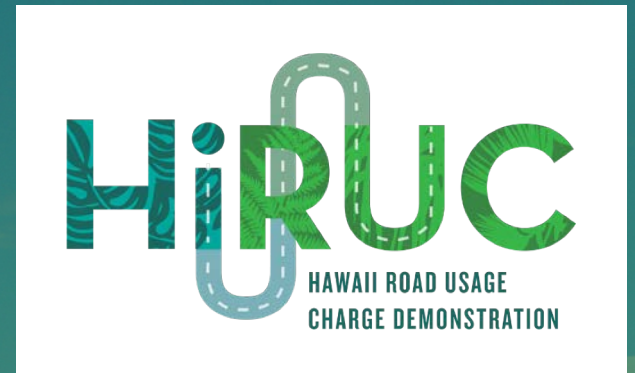
Introductions

90-second Video

20-minute Presentation

Questions from the Audience

# Hawaii Road Usage Charge Demonstration



**Scot Urada**  
Project Manager  
Hawaii Department of Transportation

March 2019



# Community Meeting

## Program

Introductions

90-second Video

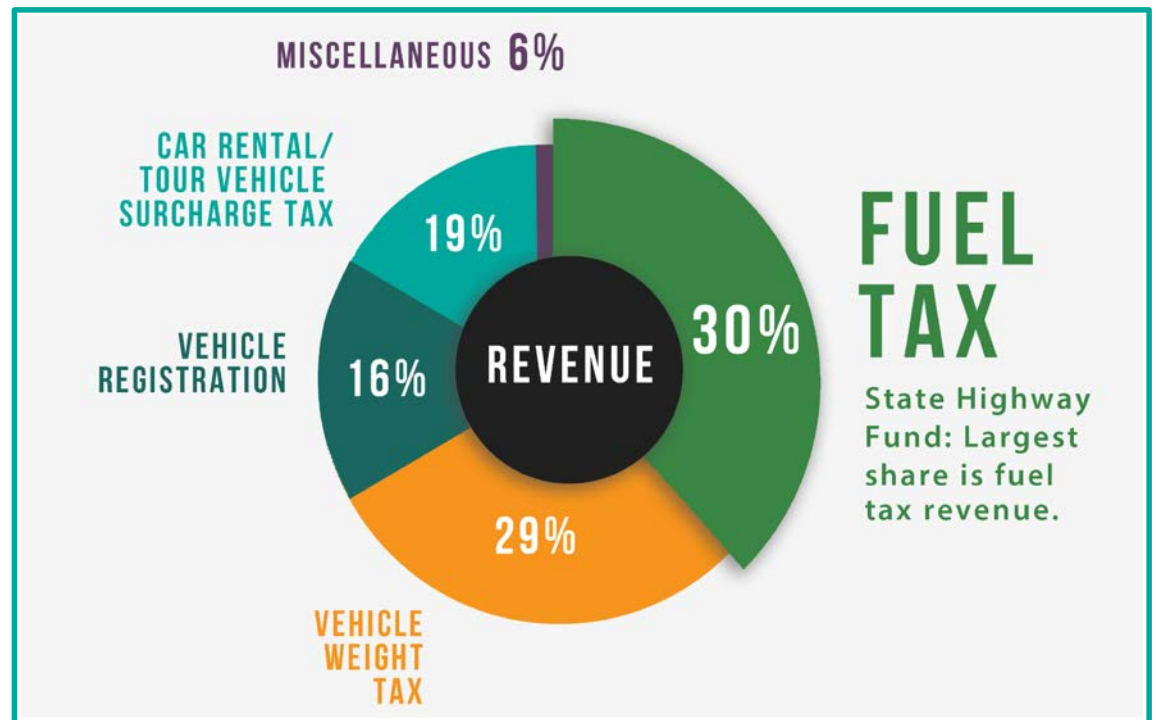
20-minute Presentation

Questions from the Audience

**Transportation  
connects our  
families, jobs,  
and  
communities**



We all share in how we pay for the upkeep of our roads & bridges



The biggest share of our contribution to roads & bridges comes from gas taxes

## GAS PRICE BREAKDOWN

**\$3.78/GAL**

CITY & COUNTY FUEL OF HONOLULU TAX **16.5¢/GAL**

STATE FUEL TAX **16¢/GAL**

FEDERAL FUEL TAX **18.4¢/GAL**

PRICE OF GASOLINE **\$3.27\*/GAL**

*\*Gasoline Prices: In September 2018, the regular gasoline price in Hawaii averaged \$3.782 per gallon, which was 93.0 cents per gallon (32.6%) higher than the national average for the same month." DBEDT*

The biggest share of our contribution to roads & bridges comes from gas taxes

## GAS PRICE BREAKDOWN

**\$3.78/GAL**

COUNTY OF FUEL  
KAUAI TAX 17¢/GAL

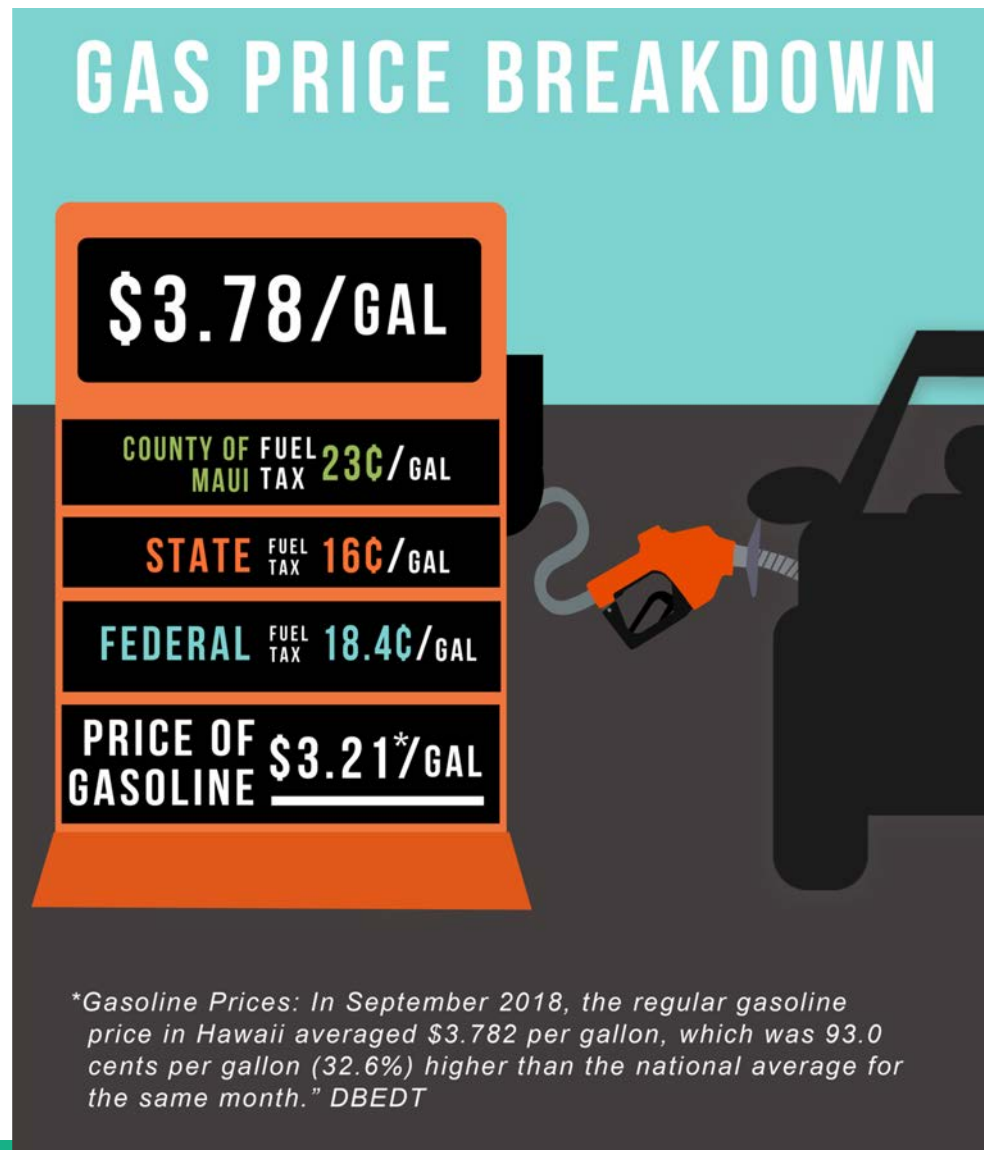
STATE FUEL TAX 16¢/GAL

FEDERAL FUEL TAX 18.4¢/GAL

PRICE OF  
GASOLINE \$3.27\*/GAL

*\*Gasoline Prices: In September 2018, the regular gasoline price in Hawaii averaged \$3.782 per gallon, which was 93.0 cents per gallon (32.6%) higher than the national average for the same month." DBEDT*

The biggest share of our contribution to roads & bridges comes from gas taxes





The biggest share of our contribution to roads & bridges comes from gas taxes

## GAS PRICE BREAKDOWN

**\$3.78/GAL**

COUNTY OF HAWAII FUEL TAX **15¢/GAL**

STATE FUEL TAX **16¢/GAL**

FEDERAL FUEL TAX **18.4¢/GAL**

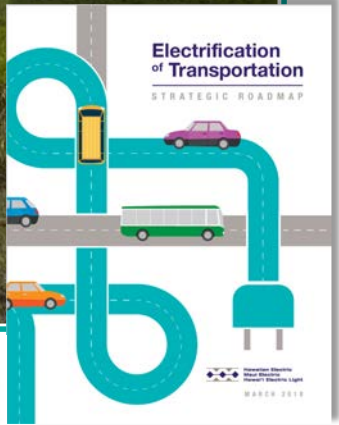
PRICE OF GASOLINE **\$3.29\*/GAL**

*\*Gasoline Prices: In September 2018, the regular gasoline price in Hawaii averaged \$3.782 per gallon, which was 93.0 cents per gallon (32.6%) higher than the national average for the same month." DBEDT*

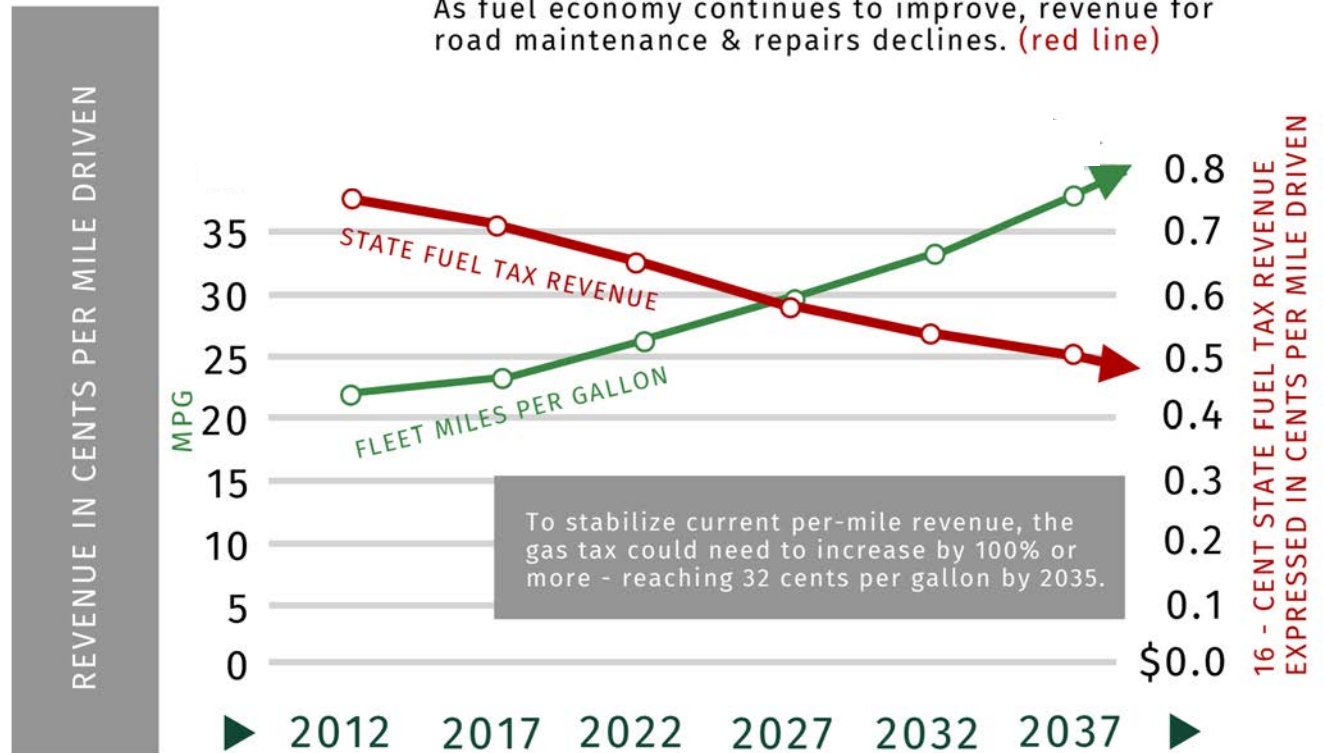
**New, clean  
vehicles are  
improving our  
environment  
and energy  
independence**



Hawaii is leading the way to an energy system free of fossil fuels



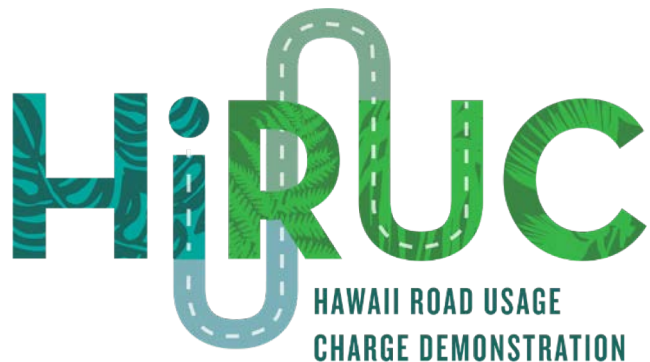
As we achieve our renewable energy goals, more cars will pay less to use the roads



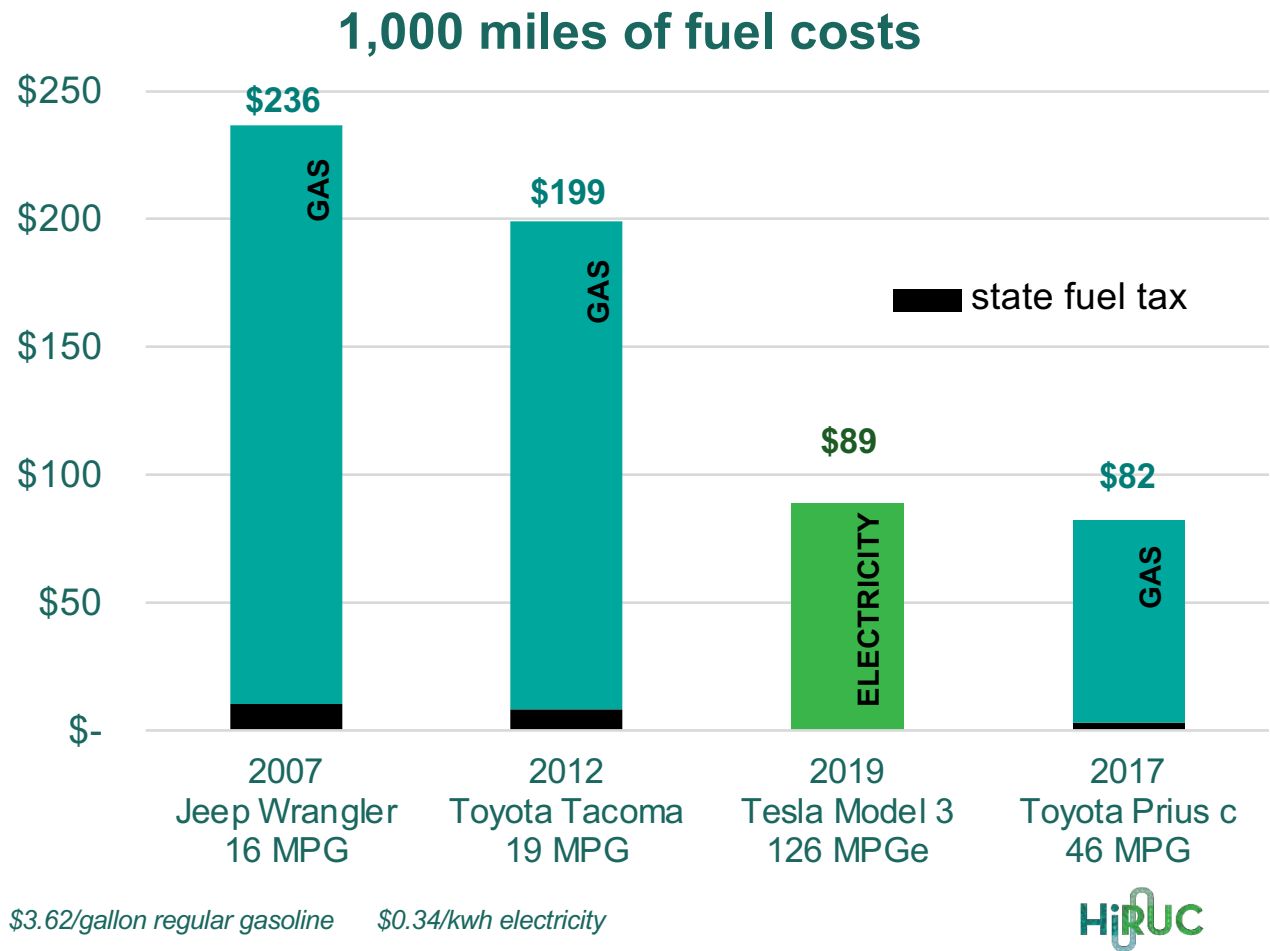
# About Hawaii Road Usage Charge Demonstration (HiRUC)

**A road usage charge is a per-mile charge that would replace the state gas tax**

- **Gas tax revenue for highway funding will decline because of more fuel efficient cars**
- **The state seeks a new, more stable and fair way to fund roads instead of the gas tax**
- **HDOT is researching road usage charges as one possible way to replace the gas tax**



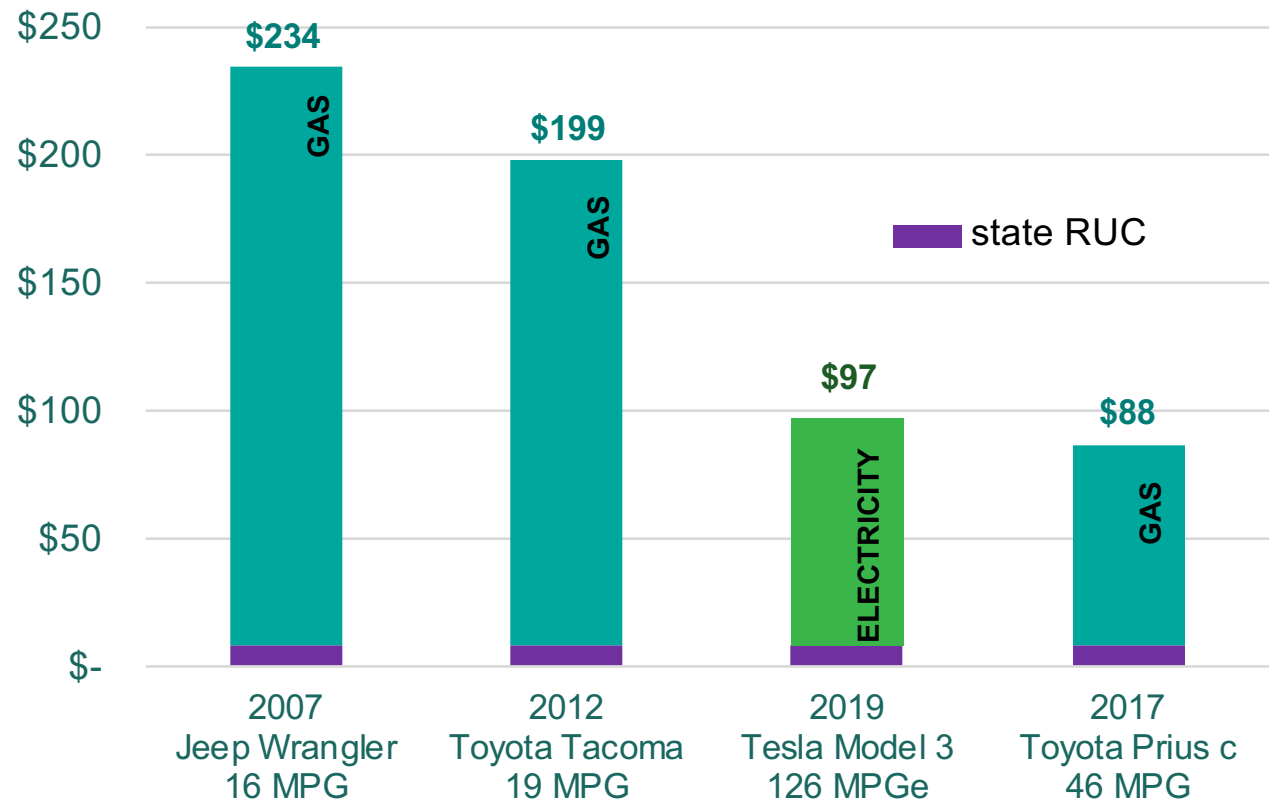
# State Fuel Tax is a small part of the overall cost



# RUC is a proposed replacement to the state fuel tax

*Not an increase  
Not tolling  
Not congestion pricing*

### 1,000 miles of fuel costs with RUC



\$3.62/gallon regular gasoline

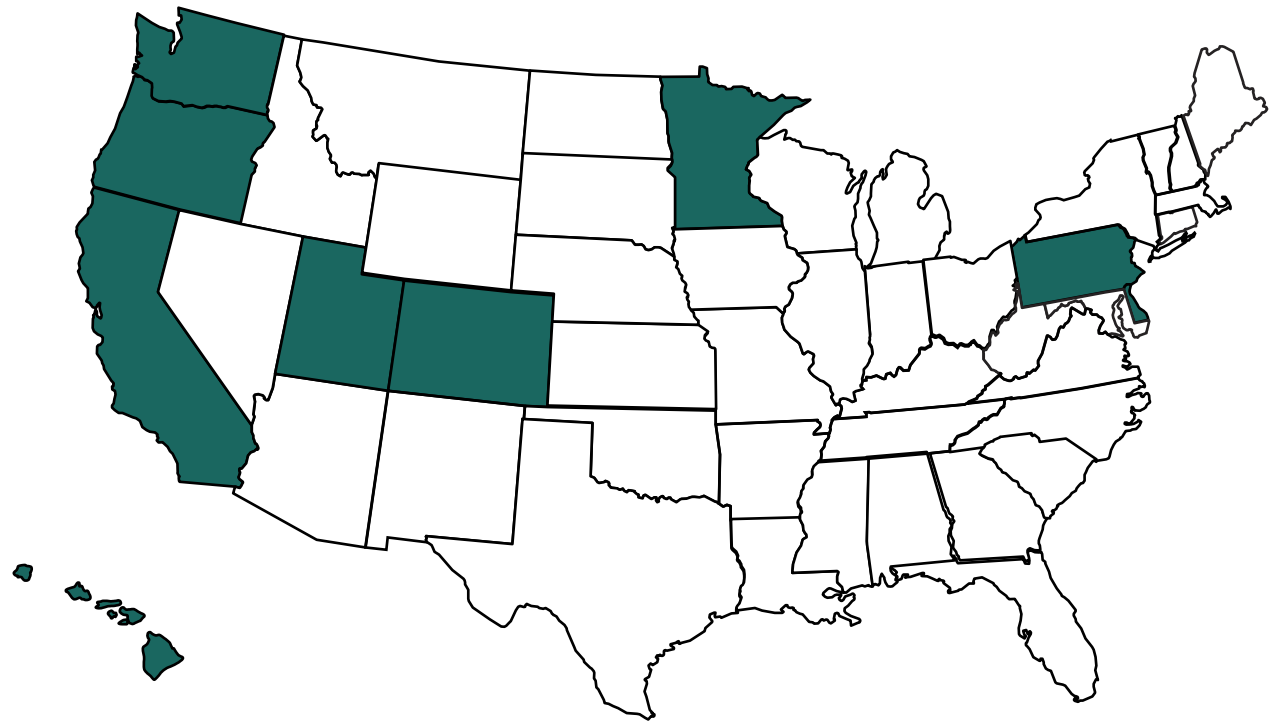
\$0.34/kwh electricity

\$0.008/mile road usage charge





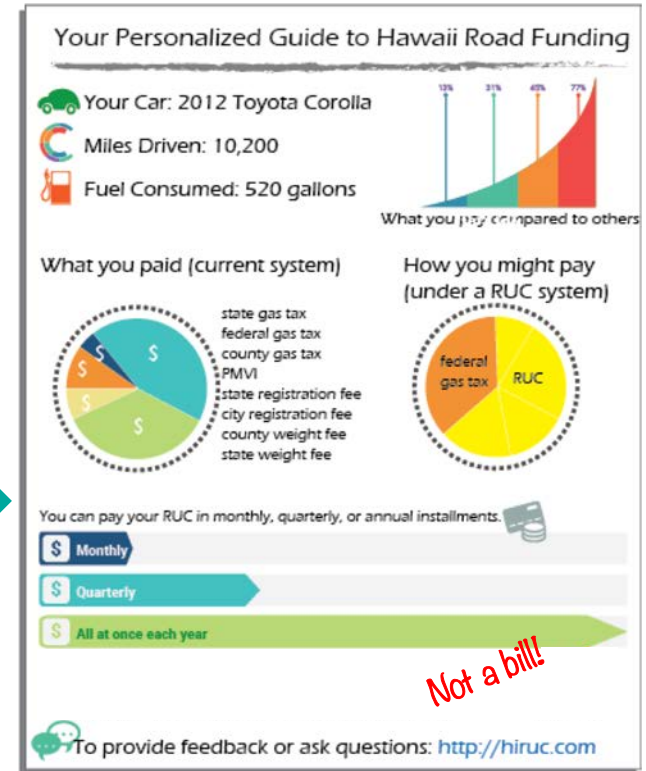
**Eight other states and several countries have conducted trials or enacted road usage charges**



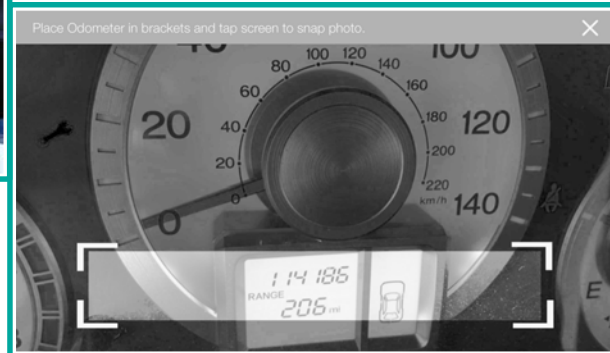
# HiRUC is a 3-year research and demonstration effort



# Later in 2019, residents will receive customized RUC statements in the mail and a survey invitation



**In 2020, up to 2,000  
volunteers will have the  
chance to test drive new  
technology**



***You can be a volunteer!***





# Question and Issues

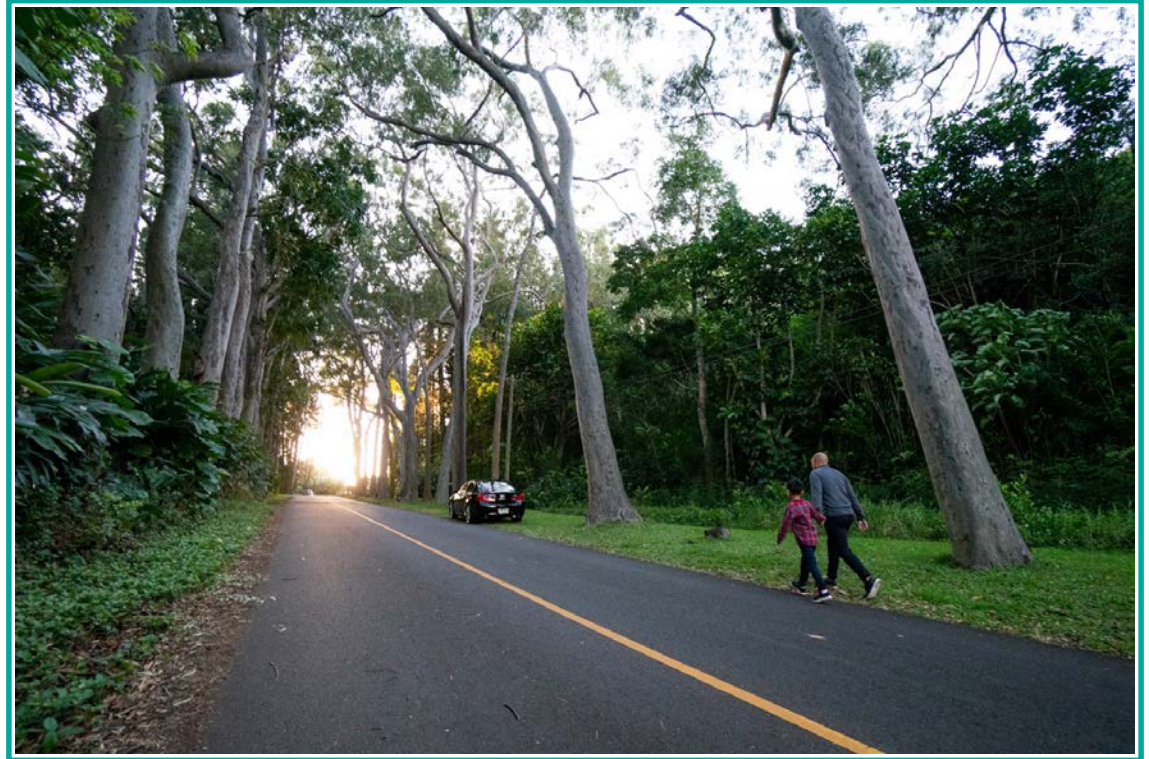
**How will drivers pay a road usage charge?**

**How is privacy protected under a road usage charge?**

**How will a road usage charge affect rural residents and long-distance commuters?**

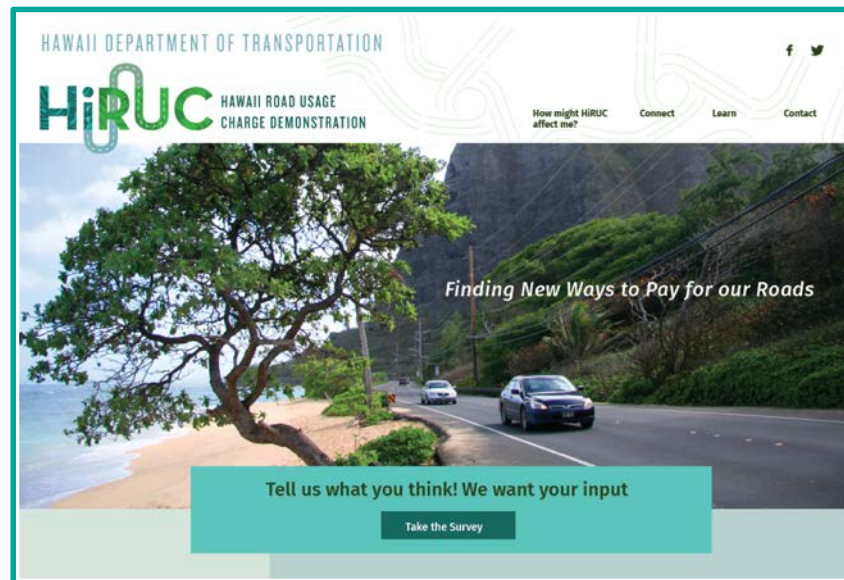
**We invite *your* questions and concerns**

**HiRUC is an opportunity to shape how we will pay for our roads and bridges in the future**



The HiRUC website provides information and feedback opportunities

# HiRUC.org





**Mahalo!**

# Rules of the Road

1. One person talks at a time
2. Everyone gets a chance to talk
3. Listen respectfully
4. Please write us a note if you have to leave early

Send us your feedback at [hiruc.org](http://hiruc.org)