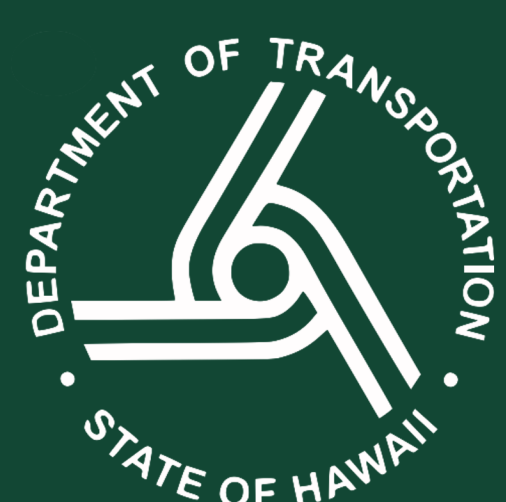
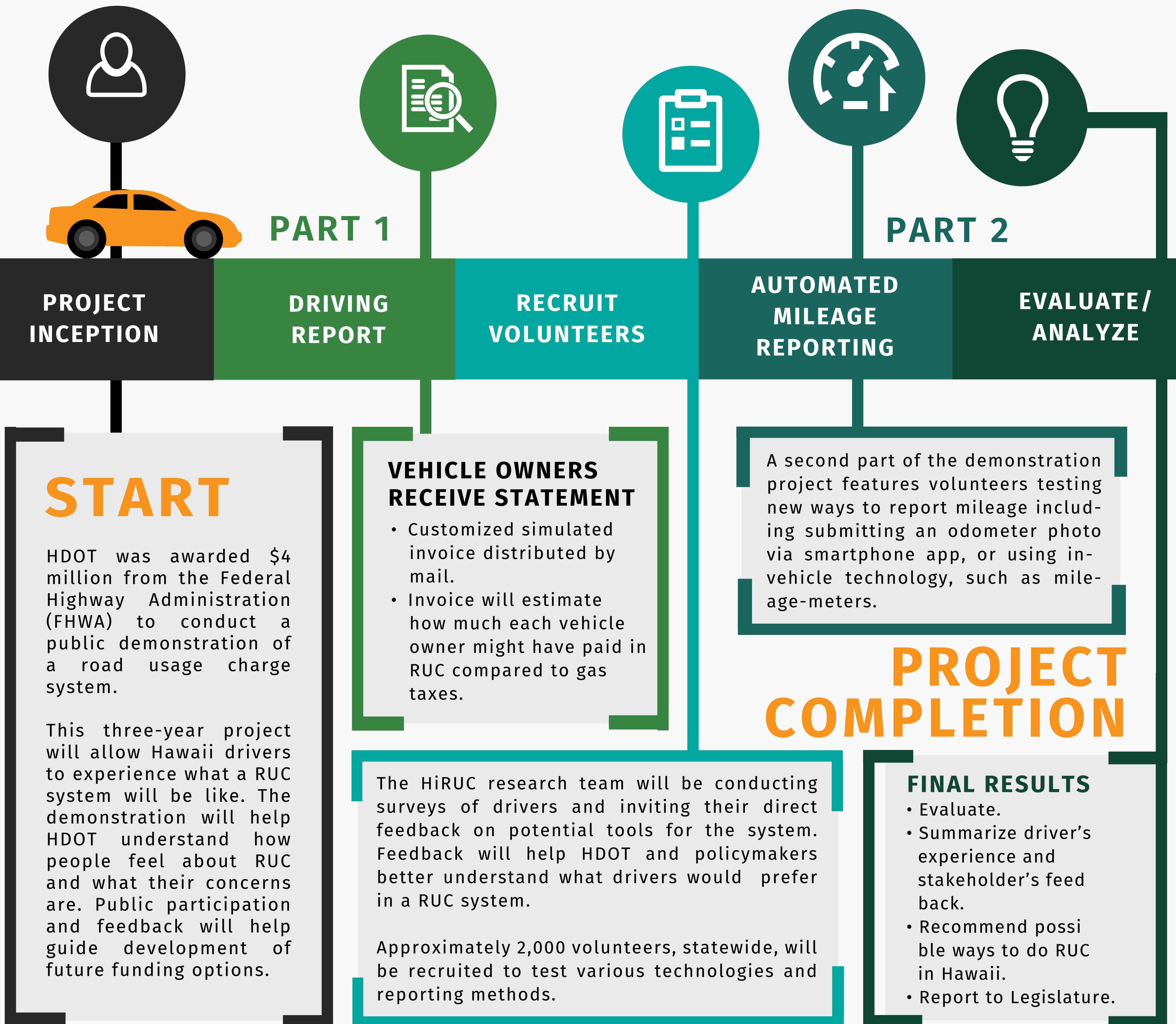


ROAD USAGE CHARGE

36-MONTH DEMONSTRATION PROJECT

HDOT is exploring RUC as one possible funding solution

The Hawaii Department of Transportation (HDOT) is anticipating a decline in our state's gas tax funding and researching alternative ways to pay for our roadways. In its 2016 Feasibility Study of Mileage-Based Fees, HDOT found promise in a per-mile road usage charge for future roadway funding. First, though, we must answer important questions. How would HiRUC affect people who live in rural areas? How would HiRUC affect various types of households? How expensive will it be to administer HiRUC? How will driver privacy be protected? These, and other issues, require additional research and testing.



For more info, please contact:

HDOT Public Affairs Office: (808) 800-3527
 Project email: contact@HIRUC.org
 Web site: www.HiRUC.org

Mahalo for coming to learn more and contribute to this discussion.