

Airport Land Use Planning



Source: Mead & Hunt, Inc.

Airport Land Use Planning



Meeting Date/Time Here

Agenda

- Welcome and Introductions
- Basics of Compatible Land Use
 - What is it?
 - 5 Areas of Concern
 - Typical Land Use Classifications
- Basis for Airport Zoning



Introductions

Compatible Land Use

- What is it?
 - Developments that comply with generally accepted restrictions on location, height, and activity that provide for safe aircraft movement and airport operations, as well as the preservation of public health, safety, and welfare for those persons located in the surrounding airport environs.

5 Areas of Concern

- 1) Noise Sensitivity
- 2) Population Density
- 3) Tall Structures
- 4) Visual Obstructions
- 5) Wildlife Attractants

Noise Sensitivity

- Concern regarding the disruption of activities
- Critical uses include:
 - Schools
 - Religious Institutions
 - Residential development
 - Other

School



Source: Mead & Hunt, Inc.

Residential Subdivision



Source: Mead & Hunt, Inc.

Population Density

- Concern regarding concentrations of people in proximity to the Airports
- Critical uses include:
 - Residential development
 - Hospitals
 - Recreational/special uses
 - Other

Recreation/Special Use



Source: Mead & Hunt, Inc.

Special Use - Theater



Source: Mead & Hunt, Inc.

Tall Structures

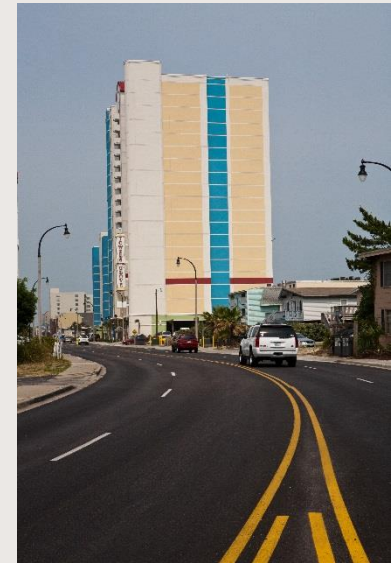
- Concern regarding obstructions to flight
- Critical uses include:
 - Cell towers
 - Power lines
 - Vegetation (trees)
 - Tall buildings
 - Wind turbines
 - Other

Cell Tower



Source: Mead & Hunt, Inc.

Buildings



Source: Mead & Hunt, Inc.

Wind Turbine



Source: Mead & Hunt, Inc.

Power Lines



Source: Mead & Hunt, Inc.

Visual Obstructions

- Concern regarding:
 - Smoke/steam
 - Dust
 - Glare
 - Light emissions
- Critical uses include:
 - Industrial
 - Farmland
 - Water bodies
 - Other

Dust – Gravel Extraction



Source: Mead & Hunt, Inc.

Glare – Body of Water



Source: www.istockphoto.com

Steam Emissions – Industrial



Source: Mead & Hunt, Inc.

Light Emissions



Source: www.istockphoto.com

Wildlife Attractants

- Concern regarding hazards to aircraft
- Critical uses include:
 - Landfills/sewage treatment
 - Farmland
 - Water bodies
 - Recreational
 - Other

Sewage Treatment



Source: Mead & Hunt, Inc.

Farmland



Source: Mead & Hunt, Inc.

Pond



Source: Mead & Hunt, Inc.

Wetlands



Source: Mead & Hunt, Inc.

Typical Land Use Classifications

- Residential Activities
- Commercial Activities
 - (shopping, business, or trade)
- Industrial/Manufacturing
 - (industrial, manufacturing, and waste)
- Institutional
- Infrastructure
- Agriculture
- Parks and Recreation

Industrial



Source: Mead & Hunt, Inc.

Commercial



Source: Mead & Hunt, Inc.

Institutional



Source: Mead & Hunt, Inc.

Residential



Source: Mead & Hunt, Inc.

Agriculture



Source: Mead & Hunt, Inc.

Infrastructure



Source: www.istockphoto.com

Basis for Airport Land Use Compatibility

- Grant Assurances
 - 20 – Hazard Removal and Mitigation
 - 21 – Compatible Land Use
- Orders and Advisory Circulars (ACs)
- Federal Aviation Regulation (FAR) Part 77
 - A set of imaginary surfaces, called “Part 77 Surfaces,” that are used to protect the areas surrounding an airport from incompatible use. These surfaces include:
 - Primary Surface
 - Horizontal Surface
 - Approach Surface
 - Conical Surface
 - Transitional Surface